

# TABLE OF CONTENTS

<b>FOOD SERVICE</b> .....	2
Beverage .....	2
Beverage - Accessories .....	2
Blender .....	6
Food Preparation .....	10
Food & Vegetable Processor .....	10

# FOOD SERVICE

## BEVERAGE

### BEVERAGE - ACCESSORIES



#### **VITAMIX ADVANCE BLADE ASSEMBLY FOR MODEL : ADVANCE (10199) / TQO (69733) / TGA (67000) ~ VMC-ABA.15990.MZ04**

- Designed for use with Vitamix Advance blender containers
- Ideal for blending thick, frozen smoothies, milkshakes, and other beverage recipes with ice
- Hardened stainless steel construction for long-lasting use
- Durable stainless steel bearings help minimize operation noise
- Quick and easy to install

[Read More](#)

**SKU:** 15153

**Price:** RM840.00



## VITAMIX CONTAINER 1.4L (WET BLADE CONTAINER) - FOR DRINK MACHINE TWO SPEED (C/W BLADE & CONTAINER)

[Read More](#)

**SKU:** 58806

**Price:** RM1,830.00



## VITAMIX 1.4 LITER CONTAINER FOR MODEL : ADVANCE (10199) / TQO (69733) / TGA (67000) ~ VMC-061247.MZ04

VITAMIN 1.4 LITER CONTAINER FOR MODEL : ADVANCE (10199) / TQO (69733) / TGA (67000)

(PLUGLESS LID CONTAINER C/W BLADE + CONTAINER)

[Read More](#)

**SKU:** 70936

**Price:** RM920.00



## VITAMIX - DRIVE SOCKET KIT (00891) ~ VMC-DSK.00891.MZ04

VITAMIX - DRIVE SOCKET KIT (00891) FOR MODEL :  
PREP3 (10089) /  
2SPPED (00768) /  
ADVANCE (10199) /  
TQO (69733) /  
TGA (67000)

[Read More](#)

**SKU:** 00891

**Price:** RM175.00



## VITAMIX PRE 3 - 2.0 L ITER CONTAINER C/W LID (58626) FOR MODEL : PREP3 (10089) ~ VMC-PREP3.58626.MZ04

VITAMIX CONTAINER 2.0L - FOR PREP 3 (STD C/W BLADE + CONTAINER)  
- VMC 058626

[Read More](#)

**SKU:** 58626

**Price:** RM1,070.00



## **VITAMIX - WET BLADE ASSEMBLY (1152) FOR MODEL : PREP3 (10089) / 2SPEED (00768) ~ VMC-WBA.1152.MZ04**

VITAMIX - WET BLADE ASSEMBLY (1152) FOR MODEL :

- PREP3 (10089)
- 2SPEED (00768)

[Read More](#)

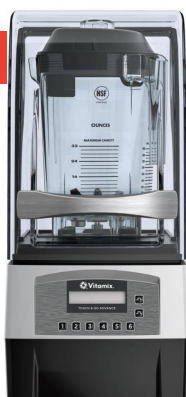
**SKU:** 01152

**Price:** RM760.00



## BLENDER

-5%



### VITAMIX TOUCH & GO ADVANCE MACHINE, 0.9 LITRES (67000) ~ VMC-TGA.67000.MZ04

For special pricing on volume orders, please contact us via [WhatsApp](#) below.

**"Existing customers who have made purchases in the last 6 months enjoy the discounted price."**

#### FEATURES



- The Touch & Go Advance offers a powerful motor, convenient pre-set controls, and noise reduction for smaller-volume shops.
- Powerful Motor
- The  $\approx 2.3$  HP motor blends frozen drinks with ease.
- Noise Reduction
- Our twist-and-lock sound enclosure features a no-tools-required design for easy removal and cleaning, and helps maintain a quiet atmosphere for your customers.
- Optimized Programs
- 6 pre-set buttons and 20 recipe programs provide consistent results for the most commonly made drinks.
- Advance <sup>®</sup> Container
- Our 32-ounce (0.9-litre) Advance container creates smooth,

pourable blends.

[Read More](#)

**SKU:** VMC-TGA.67000.MZ04

**Price:** ~~RM7,300.00~~ RM6,900.00

-2%



## VITAMIX VITA PRE 3 MACHINE, 2.0 LITER ~ VMC-PREP3.10089.MZ04

### FEATURES

- From chopping delicate ingredients to blending tough purées, the Vita-Prep® 3 is the ideal tool for supporting the demands of high-volume kitchens and processing difficult, back-to-back blends.
- **≈3-HP Motor**  
Our newly-designed motor features improved thermal capabilities, providing the power and dependability required in the most demanding commercial kitchens.
- **Manual Controls**  
Variable Speed Control delivers a full range of precise textures, and the Start/Stop switch automatically returns to a neutral position, helping to prevent unintentional start-ups.
- **Advanced Cooling Fan**  
The advanced cooling fan provides optimum reliability during peak hours of operation.
- **Tamper**  
An included Tamper provides the flexibility to blend thick and frozen mixtures without stopping the machine.
- **Durable Container**  
Our durable BPA-free 64-ounce high-impact container comes with a removable lid plug, making it easy to add ingredients while blending.

[Read More](#)

**SKU:** VMC-PREP3.10089.MZ04

**Price:** ~~RM4,500.00~~ RM4,400.00

-3%



## VITAMIX DRINK MACHINE TWO-SPEED 1.4 LITRES (00768) ~ VMC-2SPEED.00768.MZ04

### FEATURES :

- The Drink Machine™ Two-Speed offers easy-to-use blending controls and durable construction—because reliable blending equipment and consistent drink quality are non-negotiables for a busy bar or shop owner.
- **2.3-HP Motor**  
Enhanced motor design delivers power and durability for improved processing and back-to-back blends.
- **Intuitive Controls**  
Sturdy, easy-to-use High/Low speed control provides the durability required in demanding environments and minimizes training time.
- **Durable Container**  
Our durable BPA-free 64-ounce container blends both low-volume and high-volume beverages, and comes with a removable lid plug, making it easy to add ingredients while blending.
- **Tamper**  
An included Tamper provides the flexibility to process dense recipes like açai bowls and hard-to-blend fruit smoothies without stopping the machine.

[Read More](#)

**SKU:** VMC-2SPEED.00768.MZ04

**Price:** ~~RM3,500.00~~ RM3,400.00

-7%



## VITAMIX ADVANCE DRINK MACHINE, 1.4 LITER (10199) ~ VMC-ADVANCE.10199.MZ04

### FEATURES :

- From fruit smoothies to thick shakes, the Drink Machine Advance is an essential tool for adding or expanding a blended beverage menu.
- **This product is intended for commercial use only.**
- **Optimized Programs**  
Six optimized programs with automatic shut-off let you turn it on, walk away, and achieve consistent results every time.
- **Advance® Container**  
Now comes standard with a BPA-free 48-ounce Advance® container, providing 50% more blending capacity than the previous model.
- **2.3-HP Motor**  
Enhanced motor design delivers power and durability for improved processing and back-to-back blends.

- **Pulse Feature**

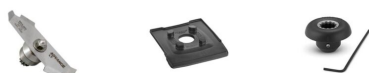
Pulse feature provides off-menu flexibility by allowing staff to manually fine-tune recipes.

[Read More](#)

**SKU:** VMC-ADVANCE.10199.MZ04

**Price:** ~~RM4,200.00~~ RM3,900.00

-2%



## VITAMIX THE QUIET ONE BLENDER HS (TQOHS) 1.4L (69733) ~ VMC-TQO.69733.MZ04

### FEATURES :

- The Quiet One is trusted by shops around the world for its groundbreaking hush, with speeds that softly blend at the decibel level of a nearby conversation. This product is intended for commercial use only.
- Easy to Clean - The new twist-lock sound enclosure is easier to remove and clean, and a larger centering pad allows for simple, one-step cleaning.
- Advance® Container - Our new Advance Blade container provides reduced noise, improved performance, and longer container life.\*
- Patented Noise Reduction - Air management and a powerful 3-peak output HP motor reduces noise, improves reliability, and minimizes downtime.
- Optimized Programs - Use 6 program buttons with 34 optimized settings for easier, consistent blending across locations.
- 3-HP Motor - The ≈3 peak output horsepower motor quickly pulverizes ingredients and blends multiple servings of smoothies, frappés, and frozen drinks with ease.

[Read More](#)

**SKU:** VMC-TQO.69733.MZ04

**Price:** ~~RM8,200.00~~ RM8,000.00

# FOOD PREPARATION

## FOOD & VEGETABLE PROCESSOR



### **HALLDE COMBI CUTTER CC-34, 1.4L (24393) ~ CC-34**

**For Project or Volume Purchase, please Email:  
[sales@fnbstores.com](mailto:sales@fnbstores.com) or whatsapp us at <https://bit.ly/3cASqVP>.**

#### FEATURES

- Capacity Up to 80 portions/day, Up to 2kg/minutes
- Vegetable Preparation attachment speed : 500,800rpm
- Cutter Attachment speed : 1450, 2650rpm, pulse button
- Voltage: 220-240v, 50/60Hz
- Weight: Machine base (8.6kg), Vegetable preparation (1kg), Cutter attachment (1.4kg)
- Fast and easy cleaning, all loose parts are machine washable
- Outstanding quality, carefully selected materials

[Read More](#)

**SKU:** CC-34

**Price:** RM9,115.00



# INDEX

## H

HALLDE COMBI CUTTER CC-34, 1.4L (24393) ~ CC-34 9

## V

VITAMIX - DRIVE SOCKET KIT (00891) ~ VMC-DSK.00891.MZ04 3

VITAMIX - WET BLADE ASSEMBLY (1152) FOR MODEL : PREP3 (10089) / 2SPEED (00768) ~ VMC-WBA.1152.MZ04 4

VITAMIX 1.4 LITER CONTAINER FOR MODEL : ADVANCE (10199) / TQO (69733) / TGA (67000) ~ VMC-061247.MZ04 2

VITAMIX ADVANCE BLADE ASSEMBLY FOR MODEL : ADVANCE (10199) / TQO (69733) / TGA (67000) ~ VMC-ABA.15990.MZ04 1

VITAMIX ADVANCE DRINK MACHINE, 1.4 LITER (10199) ~ VMC-ADVANCE.10199.MZ04 7

VITAMIX CONTAINER 1.4L (WET BLADE CONTAINER) - FOR DRINK MACHINE TWO SPEED (C/W BLADE & CONTAINER) 2

VITAMIX DRINK MACHINE TWO-SPEED 1.4 LITRES (00768) ~ VMC-2SPEED.00768.MZ04 7

VITAMIX PRE 3 - 2.0 L ITER CONTAINER C/W LID (58626) FOR MODEL : PREP3 (10089) ~ VMC-PREP3.58626.MZ04 3

VITAMIX THE QUIET ONE BLENDER HS (TQOHS) 1.4L (69733) ~ VMC-TQO.69733.MZ04 8

VITAMIX TOUCH & GO ADVANCE MACHINE, 0.9 LITRES (67000) ~ VMC-TGA.67000.MZ04 5

VITAMIX VITA PRE 3 MACHINE, 2.0 LITER ~ VMC-PREP3.10089.MZ04 6